

## Presentation

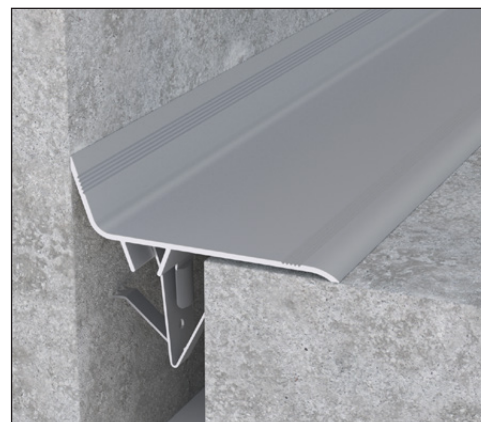
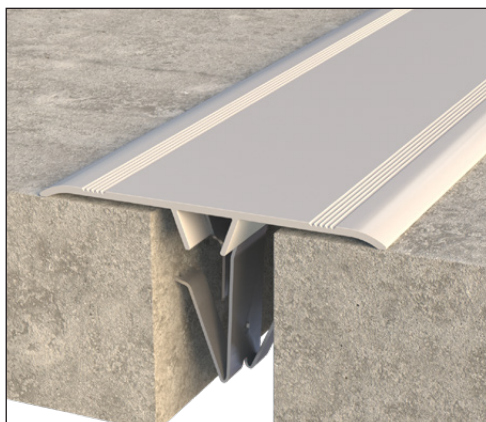
Clip-on joint covers are designed to protect and cover joints on facades, walls and ceilings. Aluminium joint cover can also be suitable for floor application only for light pedestrian traffic.

Aesthetic, decorative and economical. Quick and easy to install, without drilling or gluing.

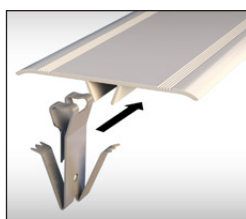
They are used in new construction and renovation work for joints openings from 20 to 150mm.

For smaller openings, it is possible to fix the joint cover without the clips but with adhesive.

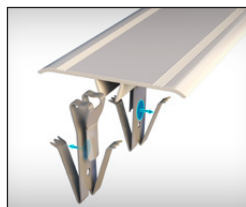
They are available in aluminum, PVC and extruded brass and are used for all types of buildings: shopping centers, airports, railway stations, office and residential buildings, hospitals, shopping malls, schools, super and hypermarkets, hotels, municipal buildings, leisure centers, factories, etc.



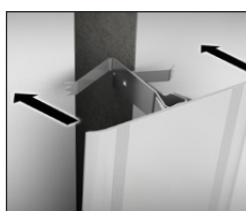
## CLIPS AFFIXED JOINT COVERS FOR STANDARD AND SEISMIC STRUCTURAL MOVEMENT JOINTS



1. Insert a fastening clip



2. Insert head of the following clip alternatively



3. Push firmly into joint



4. Joint cover in place

### Extruded aluminium

The extruded aluminium clips affixed joint covers can be used for exteriors and interiors. They are made of 6063 T6 aluminium alloy and can be finished with a 15 micron thick natural (colourless) anodizing layer. They are available from stock in 3 meter lengths in the following widths :

#### Flat models :

- 50, 60, 70, 90, 120 and 140mm.

#### Angle models :

- 50, 60, 70, 90 and 120mm.

Aluminium clips affixed joint covers can also be supplied powder-coated, upon request, in any RAL colour.

All models can be supplied mill or anodized finished.

Non standard lengths and drilled profiles can be supplied on special orders.

Please contact us for quantities and conditions.

### Extruded PVC

The extruded PVC clips affixed joint covers can be used for exteriors and interiors. The white RAL 9016, cream RAL 1015 and grey RAL 7035 are available from stock in 3 meter lengths in 50, 70 and 90mm wide, flat and angle models.

Please contact us for any special model or color.

### Extruded brass

The extruded brass clips affixed joint covers are available from stock in 3 meter lengths and in 90mm wide, flat model only. Polishing can be made upon request. They are delivered raw.



**Clip S :** For joints with an initial width of between 20 and 35mm.



**Clip SLL \*:** For joints with an initial width of between 35 and 80mm.



**Clip XL \*:** For joints with an initial width of between 60 and 110mm.



**Clip XXL \*:** For joints with an initial width of between 100 and 150mm.

## Choosing clip-on joint covers

Clip-on joint covers are used to cover joints with openings from 20 to 120mm. They are easily installed using specially designed clips.

Flat joint covers for facades, walls and ceilings bear the reference CJ.

Joint covers can only be laid on the ground in the case of light pedestrian traffic.

The number following CJ indicates the width of the joint cover in mm.

Corner profile have same references with the letter «A» at the end.

To avoid any risk of error, it is important to check the suitability of the selected clip and cover joint models on site.

## Fixing clips

Made from stainless steel, the clips guarantee particularly stable fastening and permanent flexibility (spring effect) without loss of pressure. 4 clip models for joint openings from 20 to 150mm are available from stock. These unique and particularly innovative clips are protected by international patent laws.

The choice of the clip model will be based on the initial joint width.

Special models can be studied and manufactured for specific situations such as chamfered joints. Please consult our technical department for more details.

Nuancier RAL



**Lacquering option available on request in the RAL color chart.**

\* Patented models

© All rights reserved - Non contractual drawings - 05/2025

Certified management system

ISO 9001:2015

**BUREAU VERITAS**  
Certification



**GV2 VEDA FRANCE**

20, Allée des Erables - Bât E - 93420 Villepinte - France

**Postal address**

CS 63052 - 95972 Roissy CDG Cedex

+ 33 (0)1 48 61 70 80

[export@vedafrance.com](mailto:export@vedafrance.com)

[www.vedafrance.com](http://www.vedafrance.com)