



VEDA FRANCE

Joints bâtiment - Building joints

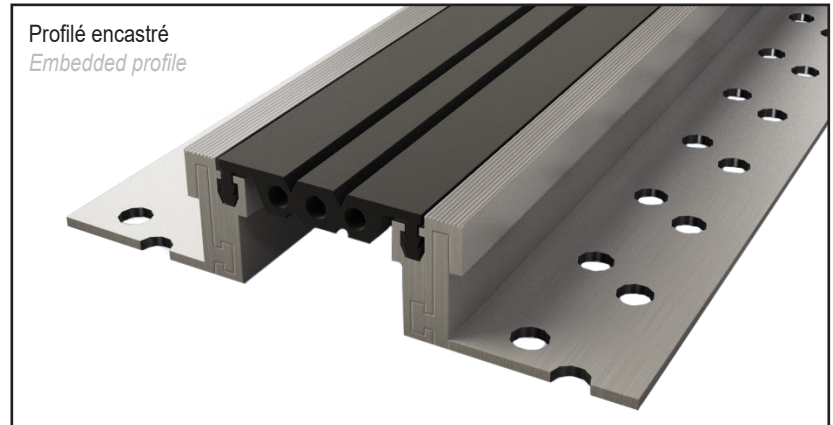
Joint de dilatation de sol

Mechanical floor joint

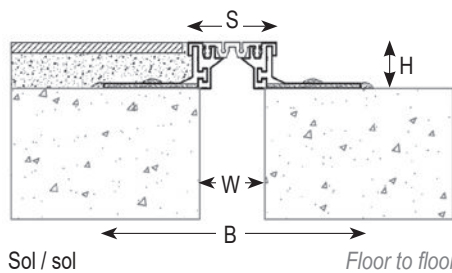
Series JDH 5.04

Joint de dilatation de sol pour extérieur et intérieur constitué de cornières en aluminium et d'un insert souple interchangeable pour tous types de finitions : dalle, chape, carrelage...

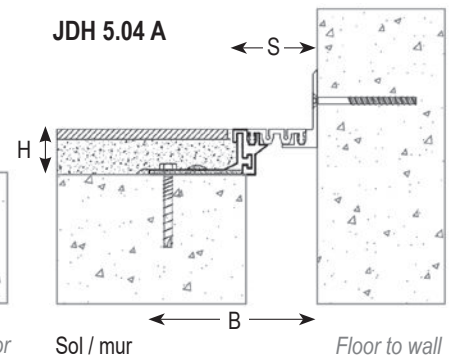
Mechanical floor expansion joint made of aluminium side plates and interchangeable flexible insert for all types of finishes : screed, natural stone, cast stone...



JDH 5.04



JDH 5.04 A



Ref. JDH 5.04	5.04-050	5.04-065
W [mm] ouverture / Gap up to [mm]	50	65
H [mm] hauteur / Depth [mm]	35 / 50**	
S [mm] approx.	68	78
B [mm] approx.	198	208
Mouvements admissibles [mm] Accommodation of movements [mm]	+7 / -7	+10 / -10
Couleur de l'insert / Insert color	Noir, gris* / Black, grey*	
Matériau / Material	Aluminium, nitrile / Aluminium, nitrile	
Longueur standard [ml] / Standard length [lm]	3	
Charge [kN] Load-bearing capacity [kN]		

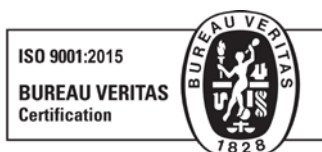
* Insert lisse uniquement disponible en 5.04-050 (autres ouvertures nous consulter). / Smooth insert available only on 5.04-050 (other gaps upon request).

**Autres hauteurs sur demande / Other Depth upon request.

Thermosoudures d'insert préconisées pour les raccords. / Hot-welding recommended for junction of the flexible insert.

The load-bearing capacity is always indicated for a joint in its initial position. In case of opening movements, the load-bearing capacity significantly reduces and the product will thus be only adapted for a light pedestrian traffic. The indicated load-bearing capacities are based on pneumatic wheels vehicles with a contact surface of 200x200 mm.

© All rights reserved - Non contractual drawings - 02/2020



GV2 VEDA FRANCE
20, Allée des Erables - Bât. E - 93420 Villepinte - France
Adresse Postale
CS 63052 - 95972 Roissy CDG Cedex

Tél : + 33 (0)1 48 61 70 80
Fax : + 33 (0)1 48 61 70 81
E-mail : contact@vedafrance.com
Web : www.vedafrance.com