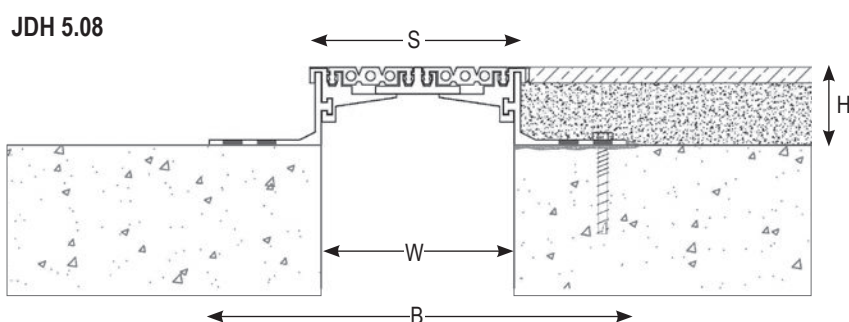
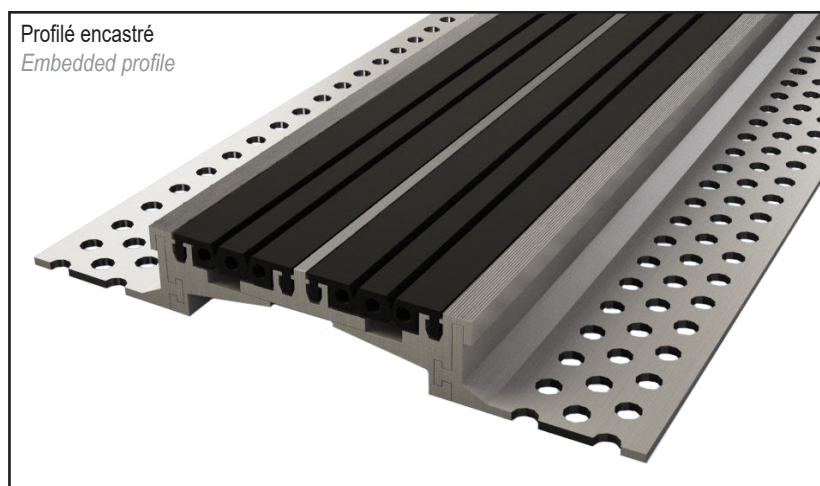



Joint de dilatation de sol grande largeur pour extérieur et intérieur constitué de cornières en aluminium et de 2 inserts souples interchangeables pour tous types de finitions : dalle, chape, carrelage...

Mechanical floor expansion joint extra wide made of aluminium side plates and 2 interchangeable flexible inserts for all types of finishes : screed, natural stone, cast stone...



Ref. JDH 5.08	5.08-125
W [mm] ouverture / Gap up to [mm]	125
H [mm] hauteur / Depth [mm]	35 / 50
B [mm] approx.	268
S [mm] approx.	137
Mouvements admissibles [mm] Accommodation of movements [mm]	+20 / -20
Couleur de l'insert / Insert color	Noir, gris / Black, grey
Matériau / Material	Aluminium, nitrile / Aluminium, nitrile
Longueur standard [m] / Standard length [m]	3
Charge [kN] / Load-bearing capacity [kN]	

The load-bearing capacity is always indicated for a joint in its initial position. In case of opening movements, the load-bearing capacity significantly reduces and the product will thus be only adapted for a light pedestrian traffic. The indicated load-bearing capacities are based on pneumatic wheels vehicles with a contact surface of 200x200 mm.

© All rights reserved - Non contractual drawings - 02/2020