



VEDA FRANCE
 Joints bâtiment - Building joints

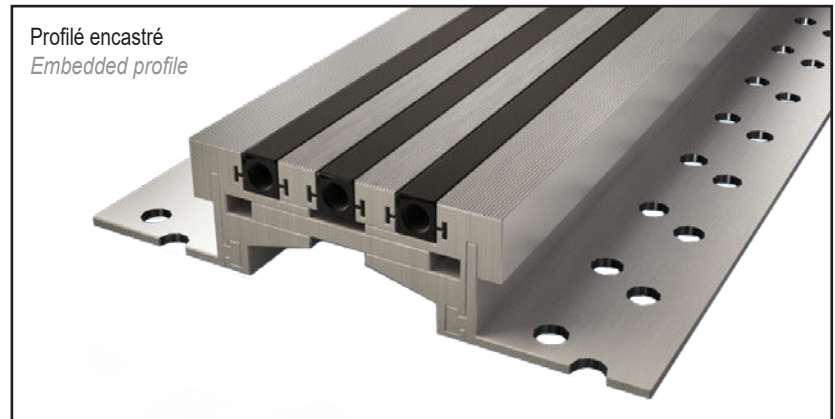
Joint de dilatation de sol pour trafic intense

Intensive traffic floor joint

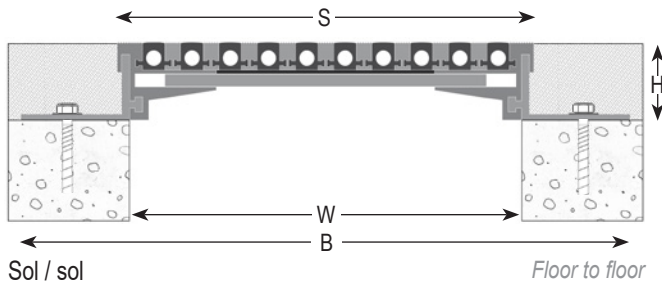
Series JDH 5.12

Joint de dilatation de sol pour passage intensif de chariots et voitures.

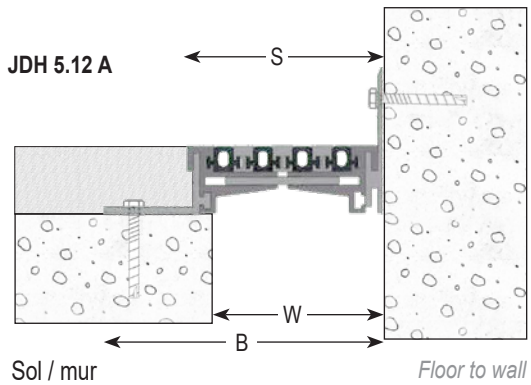
Intensive traffic floor joint for cars and trolleys. Floor to floor and floor to wall profiles are available.



JDH 5.12



JDH 5.12 A



Ref. JDH 5.12	5.12-080	5.12-100	5.12-120	5.12-160	5.12-200	5.12-260	5.12-300
W [mm] ouverture / Gap up to [mm]	80	100	120	160	200	260	300
H [mm] hauteur / Depth [mm]	35 / 40 / 50 / 55 / 60 / 80 / 100						
S [mm] approx.	100	120	140	170	240	280	320
B [mm] approx.	185 [205]	205 [225]	225 [245]	260 [280]	330 [350]	375 [395]	430 [455]
Mouvements admissibles [mm] Accommodation of movements [mm]	+9 / -9	+12 / -12	+15 / -15	+25 / -15	+30 / -15	+35 / -15	+40 / -20
Couleur de l'insert / Insert color	Noir, gris / Black, grey						
Matériau / Material	Aluminium, nitrile / Aluminium, nitrile						
Longueur standard [m] / Standard length [m]	4						
Charge [kN] Load-bearing capacity [kN]							

Existe en version sol/sol et sol/mur. *Floor to floor and floor to wall profiles available.*

The load-bearing capacity is always indicated for a joint in its initial position. In case of opening movements, the load-bearing capacity significantly reduces and the product will thus be only adapted for a light pedestrian traffic. The indicated load-bearing capacities are based on pneumatic wheels vehicles with a contact surface of 200x200 mm.

© All rights reserved - Non contractual drawings - 02/2020



GV2 VEDA FRANCE
 20, Allée des Erables - Bât. E - 93420 Villepinte - France
 Adresse Postale
 CS 63052 - 95972 Roissy CDG Cedex

Tél : + 33 (0)1 48 61 70 80
Fax : + 33 (0)1 48 61 70 81
E-mail : contact@vedafrance.com
Web : www.vedafrance.com