



Joint de dilatation de sol

Mechanical floor joint

Series JDH 5.18

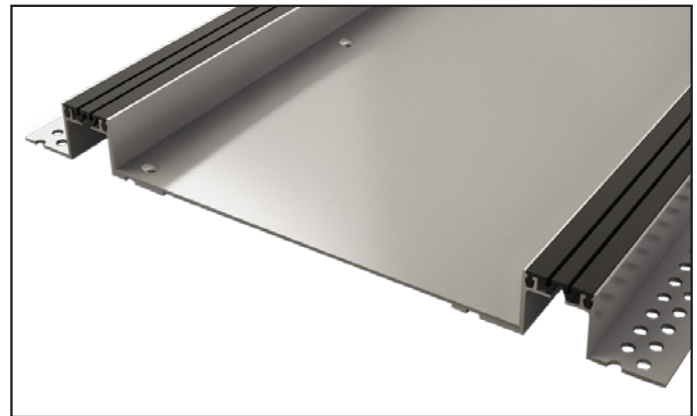
Pour ouverture jusqu'à 500 mm / For gaps up to 500 mm

Joint de dilatation de sol pour extérieur et intérieur constitué de 2 profilés identiques (généralement JDH 5.02), reliés entre eux par une structure portante en acier galvanisé.

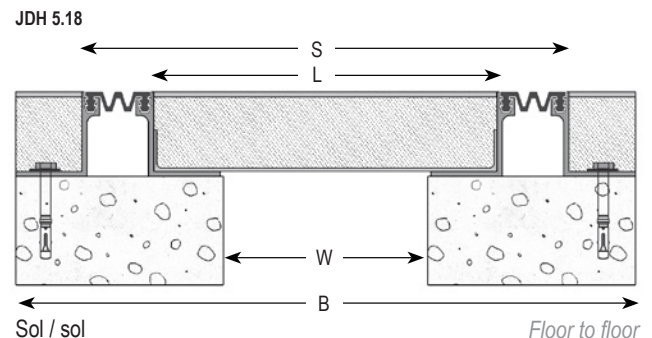
Profilé offrant d'importants mouvements, adapté à tous type de finition : dalle, chape, carrelage, marbre, pierre, moquette... Capuchons inox ou laiton disponibles pour un aspect esthétique luxueux ou une utilisation en industrie alimentaire.

Floor expansion joint for interior and exterior use made of 2 identical profiles (usually from series JDH 5.02) linked to each other with a galvanized steel supporting structure.

This profile allows large movements, and is suitable for all types of finishes: concrete slab, screed, tiles, marble, stone, carpet ... Brass or stainless steel capping are also available for a luxurious and aesthetical finishing, or for use in food industry or hospitals.



Series JDH 5.18 tile finish



Ref. JDH 5.18	5.18-060-100	5.18-060-150	5.18-060-200	5.18-060-250	5.18-060-300	5.18-060-350	5.18-060-400	5.18-060-450	5.18-060-500
Ouverture du joint W [mm] / Initial joint gap W [mm]	100	150	200	250	300	350	400	450	500
Mouvements standards [mm] / Standard movements [mm]	+20 / -20								
Dimension plateau central L [mm] / Central Plate L [mm]	300	350	400	450	500	550	600	650	700
Hauteur totale du joint H [mm] / Joint depth [mm]	35 / 50*								
Largeur visible S [mm] / Visible width S [mm]	430	480	530	580	630	680	730	780	830
Largeur totale B [mm] / Total width B [mm]	530	580	630	680	730	780	830	880	930
Couleur de l'insert / Insert color	Noir ou gris / Black or grey								
Matériau / Material	Aluminium, acier galvanisé, nitrile / Aluminium, galvanized steel, nitrile								
Longueur standard [m] / Standard length [m]	3								
Charge [Kn] / Load bearing capacity [kN]									

Modèle de joint : JDH 5.02-060 ou JDH 5.04 renforcée. / Joint reference: Series JDH 5.02-060 or reinforced JDH 5.04. Pour toute étude ou préconisation, consulter notre service technique. / *Autres hauteurs sur demande. / Other depth upon request. Please refer to our technical department for specifications.

Thermosoudures d'insert préconisées pour les raccords. / Hot-welding recommended for junction of the flexible insert.

Mettre en place un treillis soudé dans la partie centrale, au milieu de l'épaisseur de la chape à réaliser afin d'éviter la fissuration du revêtement central. / Install welded wire mesh in the central pan, at the center of the screed in order to avoid cracks of the finish installed in the pan.

The load-bearing capacity is always indicated for a joint in its initial position. In case of opening movements, the load-bearing capacity significantly reduces and the product will thus be only adapted for a light pedestrian traffic. The indicated load-bearing capacities are based on pneumatic wheels vehicles with a contact surface of 200x200 mm.

© All rights reserved - Non contractual drawings - 02/2020

