



VEDA FRANCE
 Joints bâtiment - Building joints

Floor expansion joint

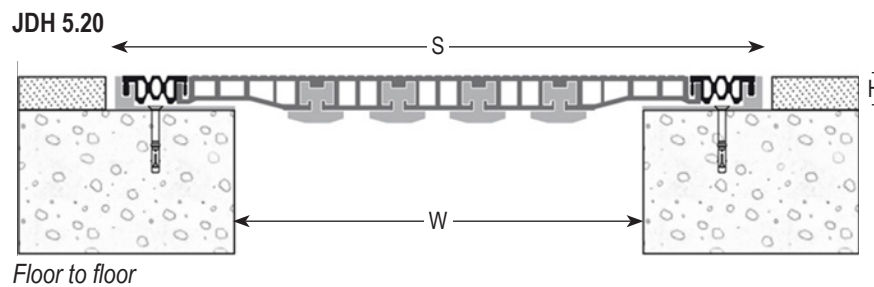
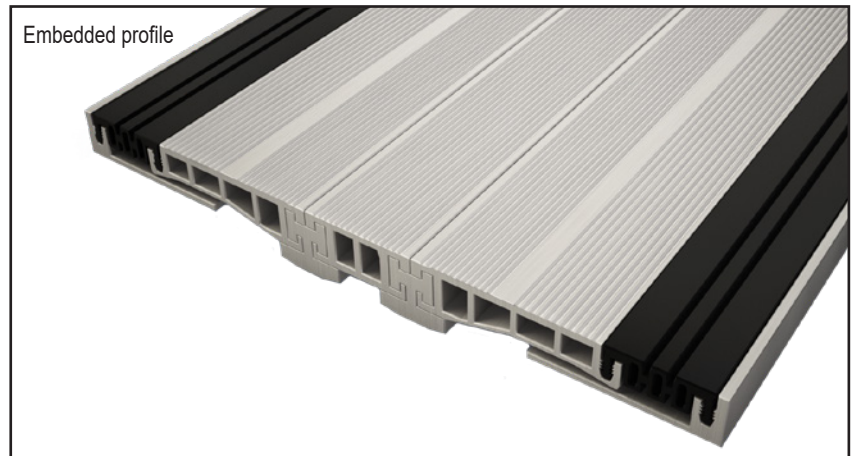
Suitable for hospitals and flexible floorings

Series JDH 5.20

Mechanical floor expansion joint made of drilled aluminium side plates, an aluminium central part and 2 black colour interchangeable flexible inserts allowing expansion and contraction of the joint.

Smooth inserts are available for application in hospitals. Inserts + 3 mm are also available for application with flexible floorings.

JDH 5.20 expansion joint is adapted for gaps up to 400 mm.



Ref. JDH 5.20	5.20-100	5.20-150	5.20-200	5.20-250	5.20-300	5.20-350	5.20-400
W [mm] Gap up to	100	150	200	250	300	350	400
H [mm] Depth	22						
S [mm] approx.	250	300	350	400	450	500	550
Accomodation of movements [mm]	+16 / -16						
Insert color	Black, grey						
Standard length [lm]	2,5						
Load-bearing capacity [kN]							

Floor to wall profile also available

The load-bearing capacity is always indicated for a joint in its initial position. In case of opening movements, the load-bearing capacity significantly reduces and the product will thus be only adapted for a light pedestrian traffic. The indicated load-bearing capacities are based on pneumatic wheels vehicles with a contact surface of 200x200 mm.

© All rights reserved - Non contractual drawings - 02/2020



GV2 VEDA FRANCE
 20, Allée des Erables - Bât. E - 93420 Villepinte - France
 Adresse Postale
 CS 63052 - 95972 Roissy CDG Cedex

Tél : + 33 (0)1 48 61 70 80
Fax : + 33 (0)1 48 61 70 81
E-mail : contact@vedafrance.com
Web : www.vedafrance.com