



VEDA FRANCE

Joints bâtiment - Building joints

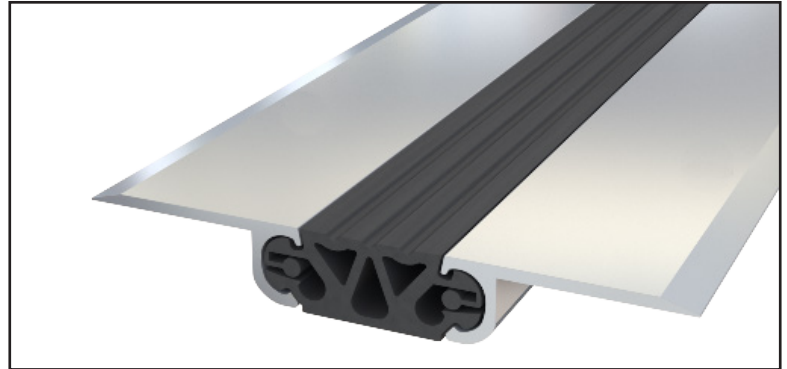
Joint de dilatation de sol

Mechanical floor joint

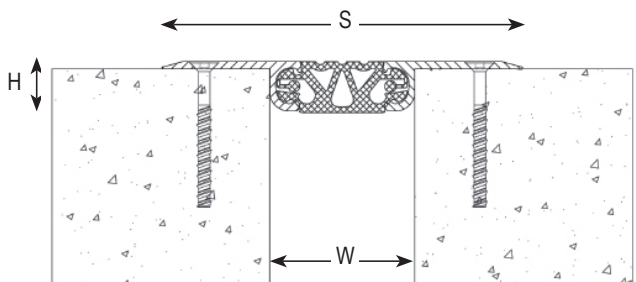
Series JDH 5.34

Joint de dilatation de sol pour extérieur et intérieur constitué de cornières en aluminium et d'un insert souple pour tout type de finition : dalle, chape, carrelage, etc.

Mechanical floor expansion joint made of aluminium side plates and flexible insert for all types of finishes : screed, natural stone, cast stone, etc.



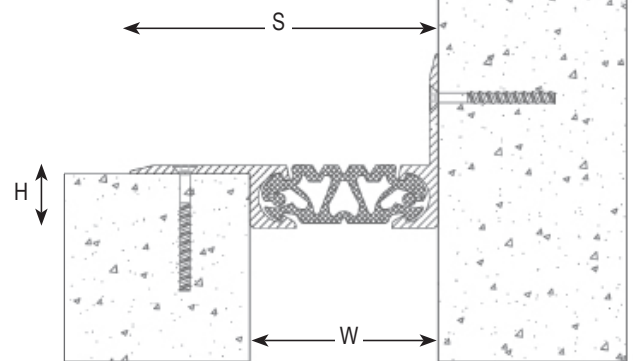
JDH 5.34-100



Sol / sol

Floor to floor

JDH 5.34-150 A



Sol / mur

Floor to wall

Ref. JDH 5.34	5.34-100	5.34-100 A	5.34-150	5.34-150 A
W [mm] ouverture / Gap up to [mm]	100		150	
H [mm] hauteur / Depth [mm]	35		50	
S [mm] approx.	250	175	345	250
Mouvement admissible M [mm] Accommodation of movement M [mm]	+15 / -15*		+25 / -25	
Couleur de l'insert / Insert color	Noir, gris* / Black, grey*			
Matériau / Material	Aluminium, nitrile / Aluminium, nitrile			
Longueur standard [ml] / Standard length [lm]	3			
Charge [kN] Load-bearing capacity [kN]				

*Mouvement de +25/-25 disponible sur demande. / +25/-25 movement upon request.

Perçage, fraisage sur demande. / Can be supplied drilled countersunk upon request.

The load-bearing capacity is always indicated for a joint in its initial position. In case of opening movements, the load-bearing capacity significantly reduces and the product will thus be only adapted for a light pedestrian traffic. The indicated load-bearing capacities are based on pneumatic wheels vehicles with a contact surface of 200x200 mm.

© All rights reserved - Non contractual drawings - 08/2020



GV2 VEDA FRANCE

20, Allée des Erables - Bât. E - 93420 Villepinte - France

Adresse Postale

CS 63052 - 95972 Roissy CDG Cedex

Tél : + 33 (0)1 48 61 70 80

Fax : + 33 (0)1 48 61 70 81

E-mail : contact@vedafrance.com

Web : www.vedafrance.com