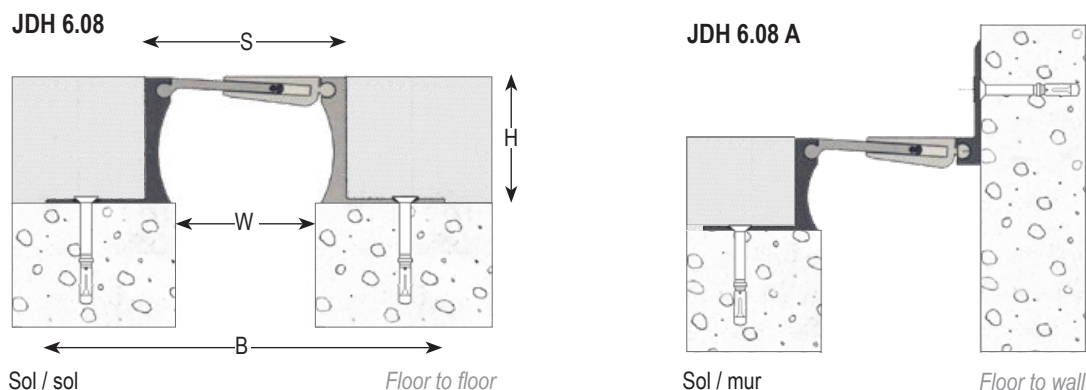
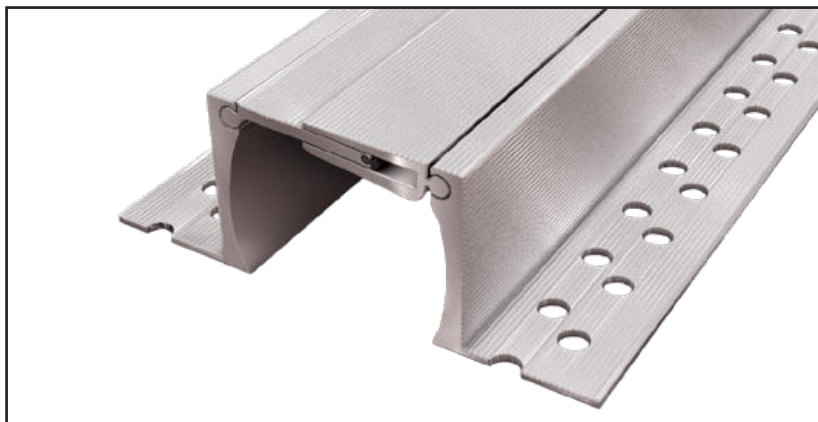


Joint de dilatation de sol tout métal pour extérieur et intérieur permettant les mouvements de dilatation et de contraction ainsi que les mouvements verticaux et de cisaillement.

All metal floor expansion joint for exterior and interior use, allowing expansion and contraction of the joint as well as vertical movement and unlimited shear movement.



Ref. JDH 6.08	6.08-030	6.08-050	6.08-070	6.08-090	6.08-110
W [mm] ouverture / Gap up to [mm]	30	50	70	90	110
H [mm] hauteur / Depth [mm]	15 / 20 / 25 / 35 / 43 / 48 / 58 / 63 / 68 / 88 / 108 / 138			20 / 25 / 35 / 43 / 48 / 58 / 63 / 68 / 88 / 108 / 138	25 / 35 / 43 / 48 / 58 / 63 / 68 / 88 / 108 / 138
S [mm] approx.	55	75	95	115	135
B [mm] approx.	150	170	190	210	230
Mouvements admissibles [mm] Accommodation of movements [mm]	+5 / - 5	+10 / - 10	+12,5 / - 12,5	+20 / - 20	+30 / - 30
Matériau / Material	Aluminium / aluminium				
Longueur standard [ml] / Standard length [lm]	4				
Charge [kN] Load-bearing capacity [kN]	69 kN		146 kN		31 kN

The load-bearing capacity is always indicated for a joint in its initial position. In case of opening movements, the load-bearing capacity significantly reduces and the product will thus be only adapted for a light pedestrian traffic. The indicated load-bearing capacities are based on pneumatic wheels vehicles with a contact surface of 200x200 mm.

© All rights reserved - Non contractual drawings - 01/2019