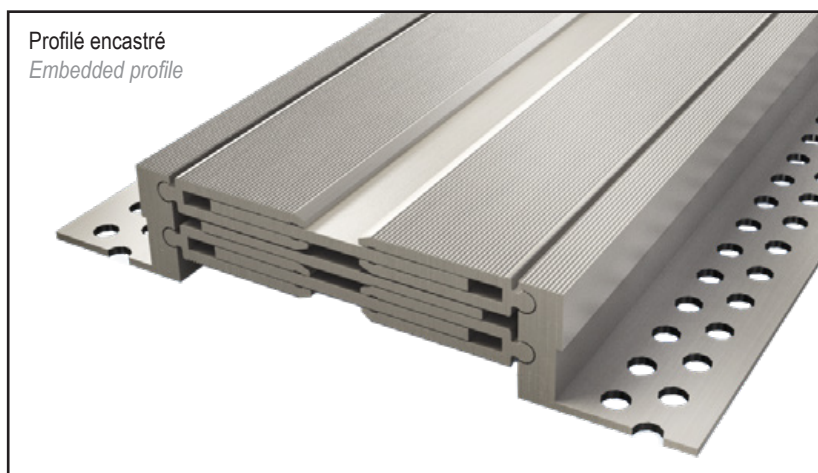


Joint à larges mouvements multidirectionnels Wide multidirectional movement expansion joint

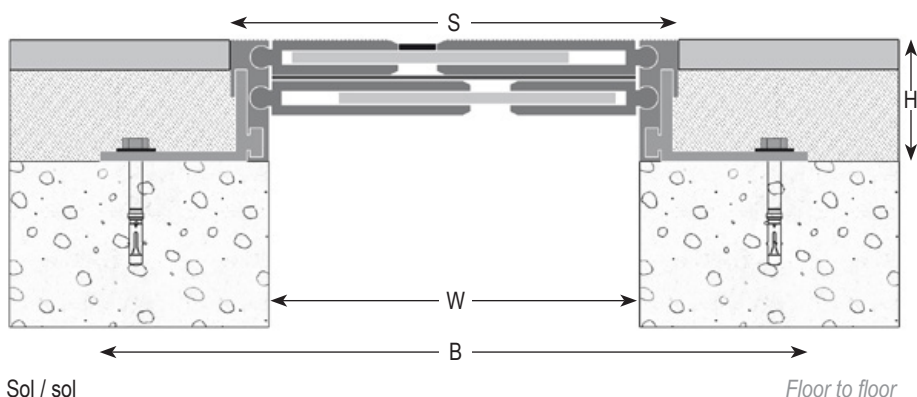
Series JDH 6.18
 Charges lourdes / Heavy duty

Joint de dilatation de sol tout métal extra large pour extérieur et intérieur.
 Mouvements multidirectionnels.

*All metal extra large structural movement joint for exterior and interior use.
 Multidirectional movements.*



JDH 6.18



Ref. JDH 6.18	6.18-135	6.18-210	6.18-250	6.18-340
W [mm] ouverture / Gap up to [mm]	135	210	250	340
H [mm] hauteur / Depth [mm]	43 / 48 / 58 / 63 / 68 / 88			
S [mm] approx.	165	250	280	375
B [mm] approx.	255	340	370	465
Mouvements admissibles [mm] <i>Accommodation of movements [mm]</i>	+20 / -20	+50 / -50	+60 / -60	+75 / -75
Matériau / Material	Aluminium / Aluminium			
Longueur standard [m] / Standard length [m]	4			
Charge [kN] <i>Load-bearing capacity [kN]</i>				

Existe aussi en version sol/mur. / Floor to wall profile also available.

The load-bearing capacity is always indicated for a joint in its initial position. In case of opening movements, the load-bearing capacity significantly reduces and the product will thus be only adapted for a light pedestrian traffic. The indicated load-bearing capacities are based on pneumatic wheels vehicles with a contact surface of 200x200 mm.

© All rights reserved - Non contractual drawings - 01/2019