



**VEDA FRANCE**

Joints bâtiment - Building joints

# Joint de dilatation de sol sismique

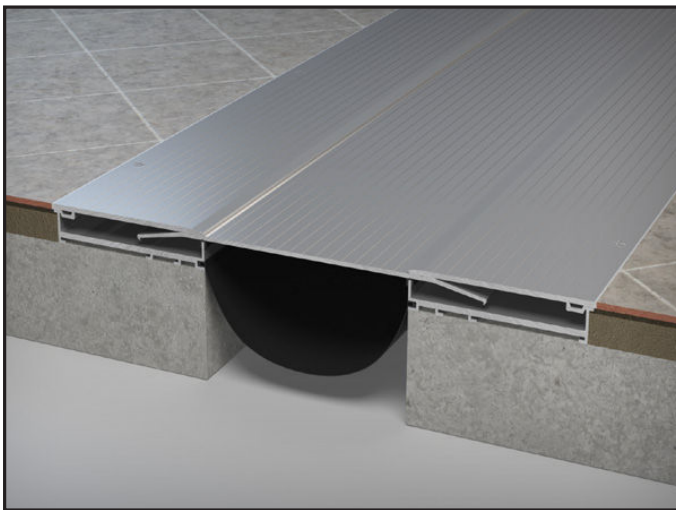
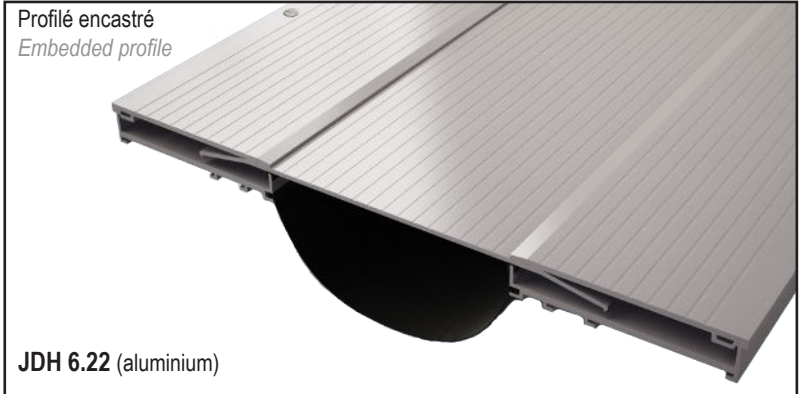
## Seismic floor expansion joint

**Series JDH 6.22**

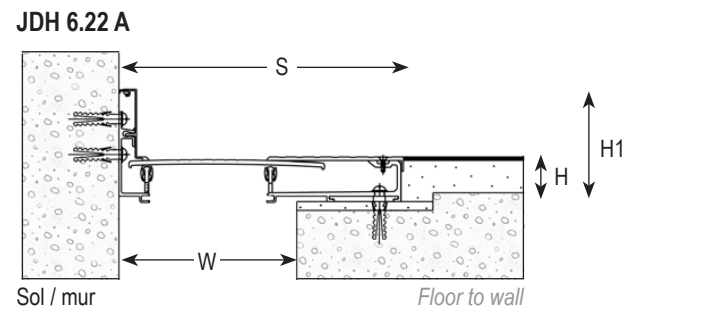
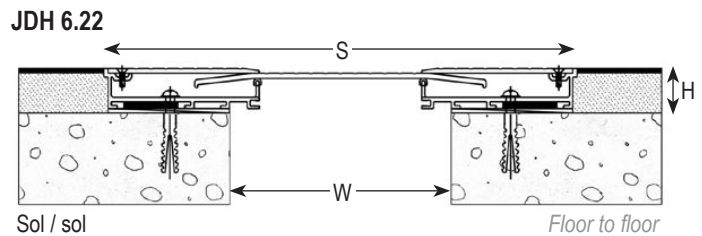
**Très grands mouvements sismiques**  
Wide seismic movements

Joint de dilatation de sol en aluminium, pour extérieur et intérieur. Très grands mouvements multidirectionnels.

Aluminium seismic expansion joint for floors, exterior and interior use. Wide multidirectional movements.



JDH 6.22 Aluminium



Ref. JDH 6.22	6.22-050	6.22-050 A	6.22-100	6.22-100 A	6.22-150	6.22-150 A	6.22-200	6.22-200 A
W [mm] ouverture / Gap up to [mm]	50		100		150		200	
H [mm] hauteur / Depth [mm]	23				37,5			
H1 [mm] hauteur / Depth [mm]	80				94,5			
S [mm] approx.	160	105	200	150	330	240	330	265
Mouvements admissibles [mm] Accommodation of movements [mm]	+25 / -25	+25 / -25	+50 / -50	+30 / -30	+85 / -100	+50 / -70	+85 / -100	+85 / -85
Matériau / Material	Aluminium / Aluminium							
Longueur standard [ml] Standard length [lm]	3							
Charge [kN] Load-bearing capacity [kN]								

The load-bearing capacity is always indicated for a joint in its initial position. In case of opening movements, the load-bearing capacity significantly reduces and the product will thus be only adapted for a light pedestrian traffic. The indicated load-bearing capacities are based on pneumatic wheels vehicles with a contact surface of 200x200 mm.

© All rights reserved - Non contractual drawings - 04/2020



**GV2 VEDA FRANCE**  
20, Allée des Erables - Bât. E - 93420 Villepinte - France  
Adresse Postale  
CS 63052 - 95972 Roissy CDG Cedex

**Tél :** + 33 (0)1 48 61 70 80  
**Fax :** + 33 (0)1 48 61 70 81  
**E-mail :** contact@vedafrance.com  
**Web :** www.vedafrance.com