



VEDA FRANCE

Joints bâtiment - Building joints

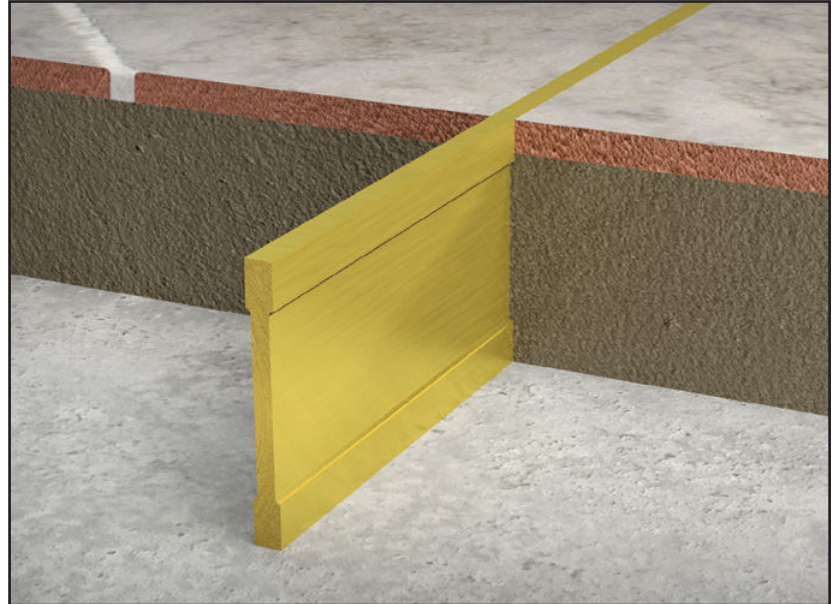
Tile dividers

PRESENTATION

The series JF Deco tile dividers are designed for decorating and dividing floors.

They can also be used to get a better protection in accordance with different finishings (mill finish, polished, high gloss polished, etc.).

Series JF Deco tile dividers are available in brass, aluminium and stainless steel.



SERIE DECO PROFILE SELECTION

Series JF Deco/B tile dividers (brass)

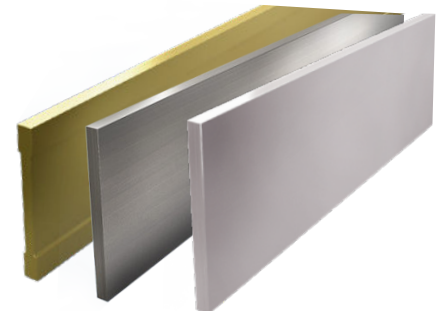
Can be used for their aesthetic aspect and/or hardness. Brass profiles are extremely resistant to chemicals that can appear during tiles installation. It is to be noted that brass oxidizes when in contact with air, particularly in a humid environment. Over time, the visible part is covered with «sheen», an oxidised layer, which modifies its aspect. They can be supplied mill finish or polished.

Series JF Deco/A tile dividers (aluminium)

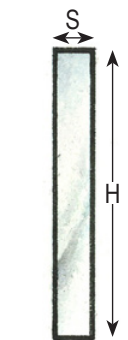
Can be used whenever no particular chemical reaction is expected. To prevent corrosion, cement-based materials must be used carefully. As aluminium reacts when in contact with alkaline products, it is important to carefully remove all traces of mortar, cement based adhesive and grout from all the visible surfaces. They can be supplied mill finish or polished.

Series JF Deco/S tile dividers (stainless steel)

Can be used to partition ceramic tiles, marble, granite, natural stone, etc. in demanding environments subject to strong mechanical constraints (heavy loads) or chemical constraints (acids). Stainless steel profiles can be used in the food industry, hospitals, swimming-pools, etc.



Brass



Aluminium
Stainless steel

Dimensions

Height H : 15* / 20 / 30 / 40 mm

Width S : 3 / 5 mm

Other dimensions upon request depending on quantities.

** Brass only*

The load-bearing capacity is always indicated for a joint in its initial position. In case of opening movements, the load-bearing capacity significantly reduces and the product will thus be only adapted for a light pedestrian traffic. The indicated load-bearing capacities are based on pneumatic wheels vehicles with a contact surface of 200x200 mm.

© All rights reserved - Non contractual drawings - 03/2023

Certified management system

ISO 9001:2015

BUREAU VERITAS
Certification



GV2 VEDA FRANCE

20, Allée des Erables - Bât. E - 93420 Villepinte - France

Postal Address

CS 63052 - 95972 Roissy CDG Cedex

Tel : + 33 (0)1 48 61 70 80

Fax : + 33 (0)1 48 61 70 81

E-mail : export@vedafrance.com

Web : www.vedafrance.com