

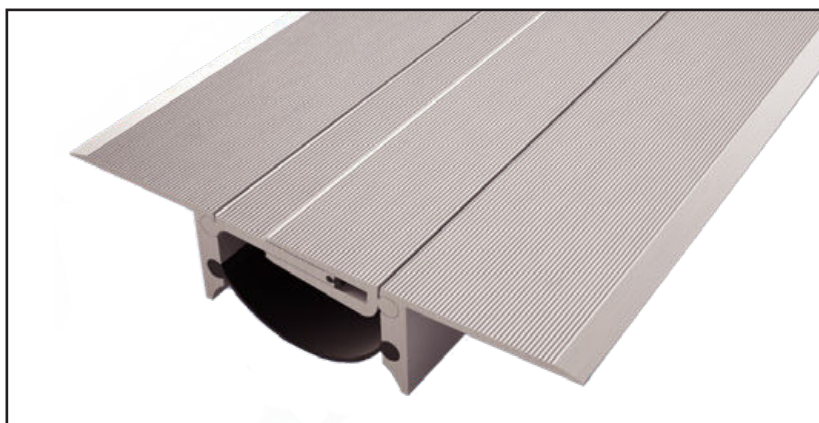
Joint de dilatation de sol tout métal

All metal floor expansion joint

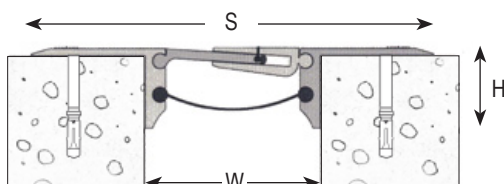
Series JDH 6.36

Joint de dilatation de sol tout métal pour extérieur et intérieur. Spécial passage de charges lourdes. Le pare vapeur peut être livré en une seule pièce de la longueur exacte du joint de dilatation, sans raccord.

All metal floor seismic expansion joint for exterior and interior use. Heavy duty. Vapour barrier can be delivered separately in one length upon request (no interruption at butt joints).



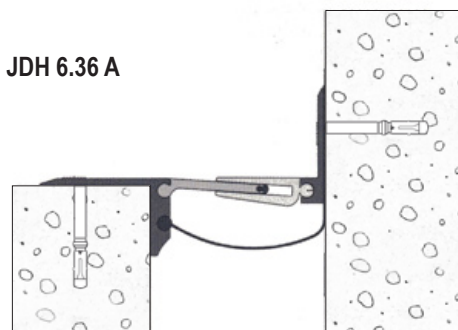
JDH 6.36



Sol / sol

Floor to floor

JDH 6.36 A



Sol / mur

Floor to wall

Ref. JDH 6.36	6.36-050	6.36-075	6.36-090	6.36-115	6.36-135
W [mm] ouverture / Gap up to [mm]	50	75	90	115	135
H [mm] hauteur / Depth [mm]	43				
S [mm] approx.	175	200	215	240	260
B [mm] approx.	175	200	215	240	260
Mouvements admissibles [mm] Accommodation of movements [mm]	+5 / -5	+10 / -10	+12,5 / -12,5	+20 / -20	+30 / -30
Matériau / Material	Aluminium / Aluminium				
Longueur standard [m] / Standard length [m]	4				
Charge [kN] Load-bearing capacity [kN]	 31 kN				

Perçage, fraisage sur demande. / Can be supplied drilled countersunk upon request.

The load-bearing capacity is always indicated for a joint in its initial position. In case of opening movements, the load-bearing capacity significantly reduces and the product will thus be only adapted for a light pedestrian traffic. The indicated load-bearing capacities are based on pneumatic wheels vehicles with a contact surface of 200x200 mm.

© All rights reserved - Non contractual drawings - 01/2019