

VEDAFEU SV[®] BLANKETS

WITHOUT MECHANICAL FIXING

“ *Solutions for standard
or seismic joints* ”



FIRESTOP 4H
EI 240

SEISMIC
MOVEMENTS +50%

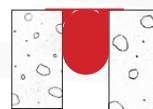
JOINT WIDTHS*
40 to 200mm

**TESTED
CERTIFIED**

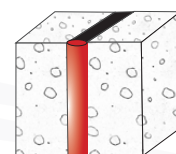
VEDAFEU SV[®] BLANKET STRENGTHS

CONFIGURATIONS

Tested and certified for horizontal and vertical applications.



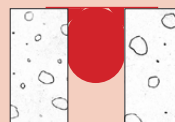
Horizontal configuration



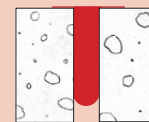
Vertical configuration

COMPRESSIBILITY

Tested and certified up to **-73%**.



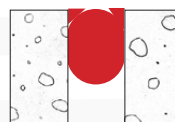
Initial joint



With compression

EXPANSION MOVEMENTS

Tested and certified up to **+50%** expansion.



Initial joint



With movement

EASY to handle and to install.

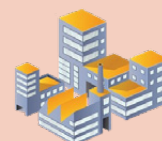


SAFE for the health and the environment.



APPLICATIONS

Hospitals, industrial buildings, offices, housing, hotels, malls, carparks, schools, train stations, airports, stadiums, etc..



*Maximum joint width: 300mm.



OFFICIAL CLASSIFICATION

Classification report n° EFR-18-000352 dated 11/06/2019

EI 240 - H - M50 - B - W 40 to 200

EI 240 - V - M50 - B - W 40 to 200

Other classification reports upon request.

Refer to classification report or ETA for types and thicknesses of supports validated.

VEDAFEU SV® Blankets according to initial joint width

Initial joint width [mm]	40	60	80	100	120	150	180	200
Reference* VEDAFEU SV®	SV40	SV60	SV80	SV100	SV120	SV150	SV180	SV200
Conditioning [m]	2							

Maximum validated gap = initial gap + M50 (50% of initial joint width).

*For intermediate gaps, the use of a smaller reference will result in a decrease in the movement capacity.

Installation instructions for joint widths from 40 to 200mm*



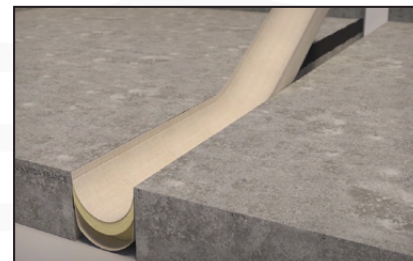
If necessary, remove formwork material such as polystyrene, honeycomb cardboard, etc. Remove dust, using a brush or a broom.



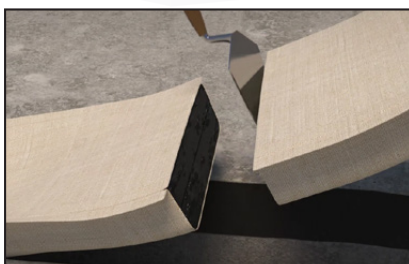
Preform the blanket in "U" shape, by folding it in its central part.



Apply the VEDACOLLE® adhesive to the inside edges of the joint on a depth of 90mm.



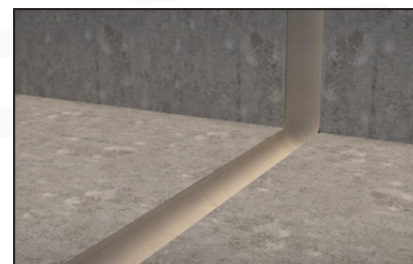
Insert the VEDAFEU SV® blanket into the joint.



To splice two lengths of blanket, apply adhesive on the extremity of both blankets before compressing them together. (For joints > 100mm the splicing method is different).



Handle with care to avoid damage to the junction. Insert the spliced blanket into the joint.



VEDAFEU SV® Blanket after installation.

*Brief installation instructions. Complete installation method available upon request.

**When applying the VEDACOLLE® adhesive, supports must be dry and clean.

In case of potential exposure to water and/or weather conditions, the system must be protected by a VED'EPDM® membrane.

For installation accessories, approved concrete supports and thicknesses, please refer to the concerned classification report.

The quantities needed for the VEDAFEU installation are indicated in the classification report and in our installation method.

Installation video and method available upon request.



VEDAFEU SV[®] PROPERTIES

VEDAFEU SV[®] firestop blankets COMPRESSIBILITY tests

Reference VEDAFEU SV [®]	Compressibility
SV 40	73%
SV 60	73%
SV 80	73%
SV 100	73%
SV 200	73%



Results of test report n° EFR-18-000352 dated 11/06/2019 (available upon request).

VEDAFEU SV[®] THERMAL Properties

In accordance with the Thermal Regulation RT 2012

Thermal resistance	SV 40	SV 60	SV 80	SV 100	SV 120	SV 150	SV 180	SV 200	-	ASTM D5930
	5,83	5,81	5,80	5,78	5,76	5,75	5,73	5,71	m².K/W	



Results of test reports n° RA.20.47.GA-SV dated 19/11/2020 (available upon request).

VEDAFEU SV[®] ACOUSTIC Properties

In accordance with the NRA 2012 (acoustic regulations)

Sound attenuation	SV 40	SV 100	SV 200	-	EN ISO 717-1
	47	48	45	dB	



Sound attenuation (dB) depending on diameter of rope (mm)

Results of test report BEB2-K.6046 dated 29/10/2020 (available upon request).

