



**VEDA FRANCE**

Joints bâtiment - Building joints

# Joint de fractionnement avec capots

## Control joint with caps

Joints de fractionnement de sol destinés à prévenir les désordres (décollements, fissurations) qui ne manquent pas de se produire lorsque des revêtements de sols sont posés en grande surface sans joint. Ils sont utilisés pour fractionner les revêtements de sols scellés tels que carrelage, céramique, pierre naturelle, etc. Pour une finition plus luxueuse ils sont fournis avec des capuchons inox ou laiton.

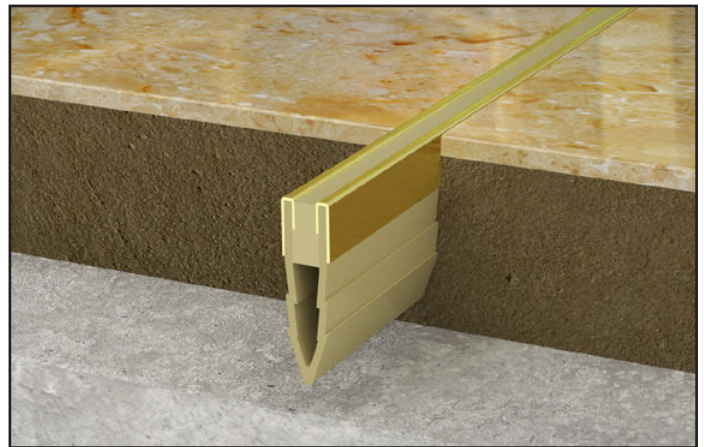
*Control joints for floors made to prevent the malfunctions (cracks, debonding) that systematically occur when flooring systems are installed in large areas without joints.*

*They are used to partition bed affixed floors such as tiles, ceramic, natural stone, etc.*

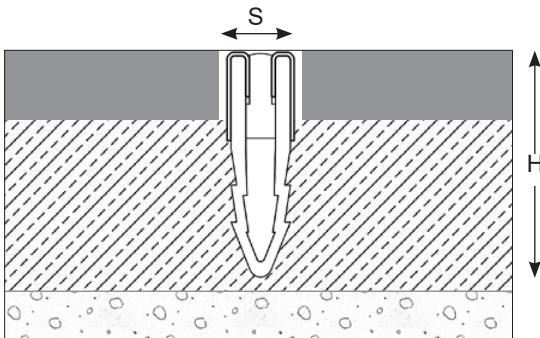
*They are supplied with stainless steel or brass caps for a more luxurious finish.*



JF 700/S gris / JF 700/S grey



JF 700/B beige / JF 700/B beige



|  |                                  |                          |
|--|----------------------------------|--------------------------|
|  |                                  |                          |
|  |                                  | 30                       |
|  |                                  | 9                        |
|  |                                  | +1 / -1                  |
|  |                                  | Gris* / Grey*            |
|  | PVC, inox / PVC, stainless steel | PVC, laiton / PVC, brass |
|  |                                  | 2,5                      |

\*Autres couleurs sur demande. / \*Other colours upon request.

The load-bearing capacity is always indicated for a joint in its initial position. In case of opening movements, the load-bearing capacity significantly reduces and the product will thus be only adapted for a light pedestrian traffic. The indicated load-bearing capacities are based on pneumatic wheels vehicles with a contact surface of 200x200 mm.

© All rights reserved - Non contractual drawings - 03/2023

Certified management system



**GV2 VEDA FRANCE**

20, Allée des Erables - Bât. E - 93420 Villepinte - France

Postal Address

CS 63052 - 95972 Roissy CDG Cedex

Tel : + 33 (0)1 48 61 70 80

Fax : + 33 (0)1 48 61 70 81

E-mail : export@vedafrance.com

Web : www.vedafrance.com