



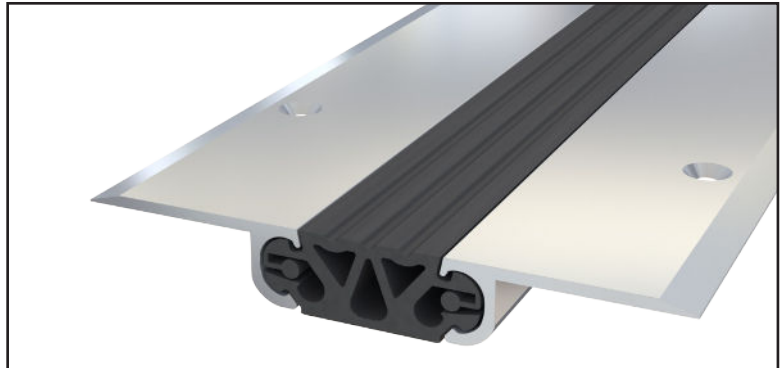
Joint de dilatation de sol

Mechanical floor joint

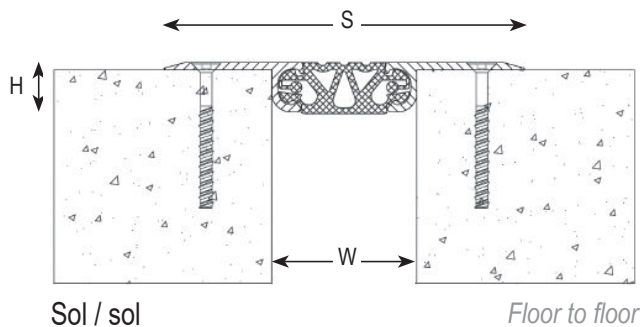
Series JDH 5.34

Joint de dilatation de sol pour extérieur et intérieur constitué de deux cornières en aluminium et d'un insert souple. Idéal pour tout type de finition : dalle, carrelage, etc.

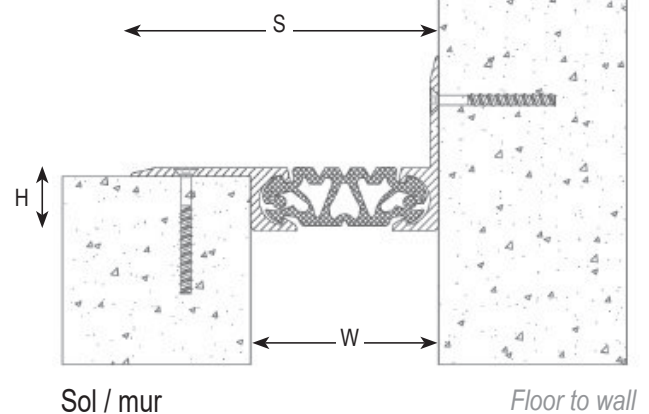
Mechanical floor expansion joint made of two aluminium side plates and a flexible insert. Suitable for all types of finishes : raw concrete, tiles, stones...



JDH 5.34-100



JDH 5.34-150 A



Ref. JDH 5.34	5.34-100	5.34-100 A	5.34-150	5.34-150 A
W [mm] Ouverture / Gap	100		150	
H [mm] Hauteur / Depth	35		50	
S [mm] approx.	250	175	345	250
Mouvements admissibles M [mm] Movements capacities M [mm]	+15 / -15*		+25 / -25	
Couleur de l'insert / Insert color	Noir / Black			
Matériaux / Materials	Cornières aluminium et insert EPDM / Aluminium side plates and EPDM insert			
Longueur standard [m] / Standard length [m]	3			
Charges Load-bearing capacities				

*Mouvements de +25/-25 mm disponible sur demande. / +25/-25mm movements upon request.

The load-bearing capacity is always indicated for a joint in its initial position. In case of opening movements, the load-bearing capacity significantly reduces and the product will thus be only adapted for a light pedestrian traffic. The indicated load-bearing capacities are based on pneumatic wheels vehicles with a contact surface of 200x200 mm.

© All rights reserved - Non contractual drawings - 10/2021

