

# Joint de dilatation de sol tout métal

## All metal floor expansion joint

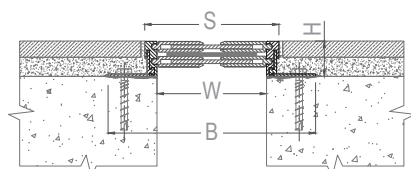
### Series JDH 6.18

Joint de dilatation de sol tout métal pour extérieur et intérieur permettant les mouvements de dilatation et de contraction ainsi que les mouvements verticaux et de cisaillement. Pour tous types de finitions : dalle, chape, carrelage, marbre..

All metal floor expansion joint for exterior and interior use, allowing expansion and contraction of the joint as well as vertical movement and unlimited shear movement. For all types of finishes: screed, natural stone, cast stone, marble...



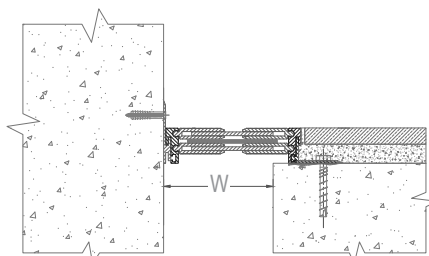
JDH 6.18-135



Sol / sol

Floor to floor

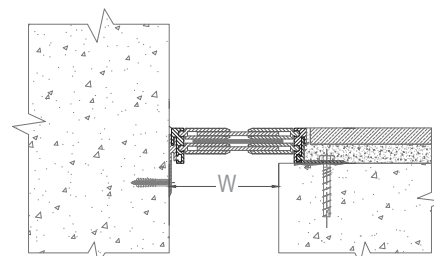
JDH 6.18-135 A avec cornière apparente  
With visible side plate



Sol / mur

Floor to wall

JDH 6.18-135 A avec cornière invisible  
With invisible side plate



Sol / mur

Floor to wall

Ref. JDH 6.18	6.18-135	6.18-210	6.18-250	6.18-340
W [mm] Ouverture jusqu'à / Gap up to	135	210	250	340
H [mm] Hauteur / Depth	43 / 48 / 58 / 63 / 68 / 88			
S [mm] approx.	165	250	280	375
B [mm] approx.	255	340	370	465
Mouvements admissibles [mm] Movement capacities [mm]	+20 / -20	+50 / -50	+60 / -60	+75 / -75
Matériau / Material	Aluminium / Aluminium			
Longueur standard [ml] / Standard length [lm]	4			
Charges Load-bearing capacities				

Fixations : nous consulter pour préconisation. / Fixings: please contact us for technical recommendation.

The load-bearing capacity is always indicated for a joint in its initial position. In case of opening movements, the load-bearing capacity significantly reduces and the product will thus be only adapted for a light pedestrian traffic. The indicated load-bearing capacities are based on pneumatic wheels vehicles with a contact surface of 200x200 mm.

© All rights reserved - Non contractual drawings - 11/2021

Système de management certifié

ISO 9001:2015

**BUREAU VERITAS**  
Certification



GV2 VEDA FRANCE

20, Allée des Erables - Bât. E - 93420 Villepinte - France

Adresse Postale

CS 63052 - 95972 Roissy CDG Cedex

Tél : + 33 (0)1 48 61 70 80

Fax : + 33 (0)1 48 61 70 81

E-mail : contact@vedafrance.com

Web : www.vedafrance.com