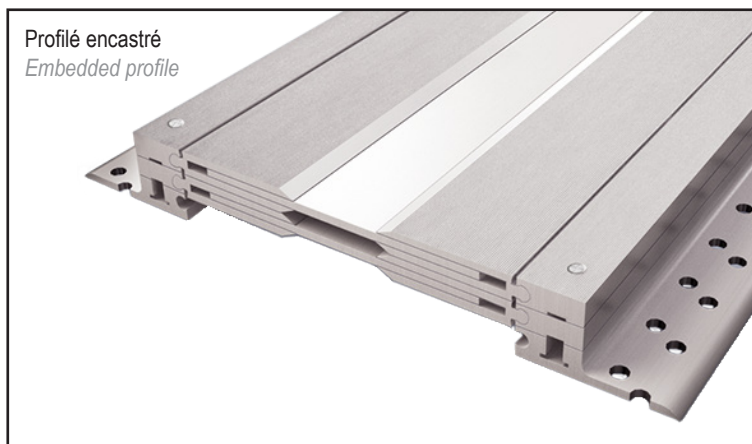
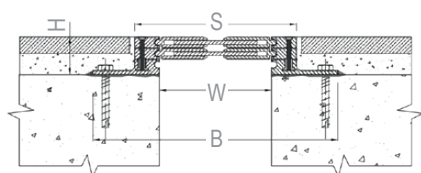


Joint de dilatation de sol tout métal pour extérieur et intérieur. Pour tous types de finitions : dalle, chape, carrelage, marbre...

All metal floor expansion joint for exterior and interior use. For all types of finishes: screed, natural stone, cast stone, marble...



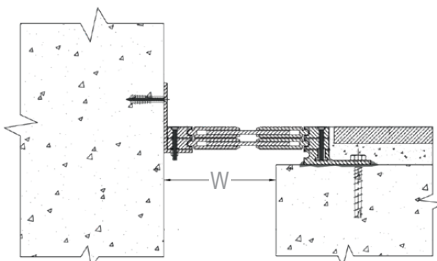
**JDH 6.20-135**



Sol / sol

Floor to floor

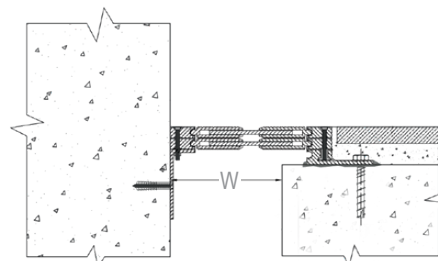
**JDH 6.20-135 A avec cornière apparente**  
With visible side plate



Sol / mur

Floor to wall

**JDH 6.20-135 A avec cornière invisible**  
With invisible side plate



Sol / mur

Floor to wall

Ref. JDH 6.20	6.20-135	6.20-210	6.20-250	6.20-340
W [mm] Ouverture jusqu'à / Gap up to	135	210	250	340
H [mm] Hauteur / Depth	32 / 45,5			
S [mm] approx.	195	280	310	405
B [mm] approx.	255	380	410	505
Mouvements admissibles [mm] Movement capacities [mm]	+20 / -20	+50 / -50	+60 / -60	+75 / -75
Matériau / Material	Aluminium / Aluminium			
Longueur standard [ml] / Standard length [lm]	4			
Charges Load-bearing capacities				

Fixations : nous consulter pour préconisation. / Fixings: please contact us for technical recommendation.

The load-bearing capacity is always indicated for a joint in its initial position. In case of opening movements, the load-bearing capacity significantly reduces and the product will thus be only adapted for a light pedestrian traffic. The indicated load-bearing capacities are based on pneumatic wheels vehicles with a contact surface of 200x200 mm.

© All rights reserved - Non contractual drawings - 11/2021

Système de management certifié

ISO 9001:2015

**BUREAU VERITAS**  
Certification



**GV2 VEDA FRANCE**

20, Allée des Erables - Bât. E - 93420 Villepinte - France

Adresse Postale

CS 63052 - 95972 Roissy CDG Cedex

Tél : + 33 (0)1 48 61 70 80

Fax : + 33 (0)1 48 61 70 81

E-mail : [contact@vedafrance.com](mailto:contact@vedafrance.com)

Web : [www.vedafrance.com](http://www.vedafrance.com)