



VEDA FRANCE

Jointes bâtiment - Building joints

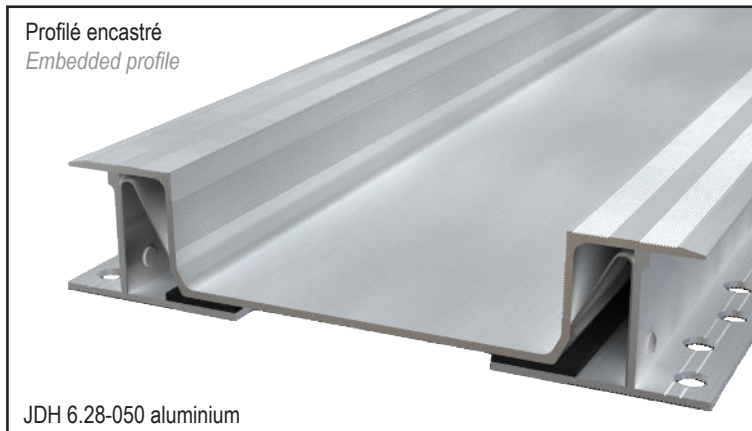
Joint de dilatation de sol tout métal

All metal floor expansion joint

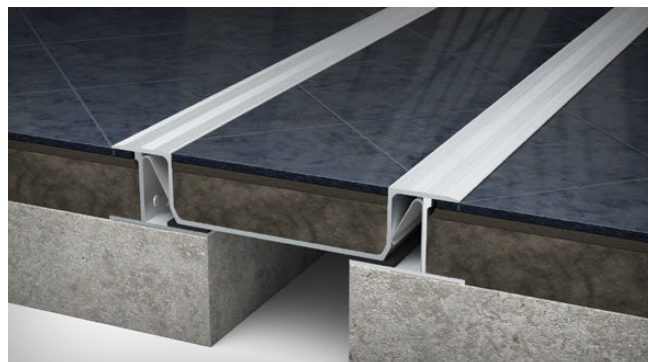
Series JDH 6.28

Joint de dilatation de sol tout métal pour extérieur et intérieur spécialement conçu pour carrelage ou pierre, composé de bases en aluminium et d'un bac central en acier inoxydable ou aluminium.

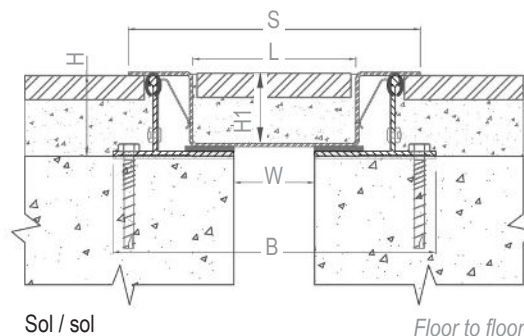
All metal expansion joint for exterior and interior use specially designed for tiles or stones. Central pan in stainless steel or aluminium, side plates in aluminium.



JDH 6.28-050 aluminium



JDH 6.28-050 inox



Ref. JDH 6.28	6.28-050*	6.28-100	6.28-150**	6.28-200**
W [mm] Ouverture jusqu'à / Gap up to	50	100	150	200
H [mm] Hauteur / Depth	50			
H1 [mm] Hauteur / Depth	43			
S [mm] approx.	180	230	280	330
B [mm] approx.	200	250	300	350
L [mm] Largeur bac central / Central pan width	100	150	200	250
Mouvements admissibles [mm] Movement capacities [mm]	+25 / -25			
Matériaux / Materials	Acier inoxydable 304, aluminium / 304 stainless steel, aluminium			
Longueur standard [m] / Standard length [m]	3			
Charges Load-bearing capacities				

*La version tout aluminium est uniquement disponible pour le modèle JDH 6.28-050. / Aluminium version only available on JDH 6.28-050.

**Pour les modèles JDH 6.28-150 et 200, un renfort à intégrer dans le bac central est nécessaire, veuillez nous consulter. / For JDH 6.28-150 and 200, a reinforcement in the screed is required. Consult us.

Fixations : nous consulter pour préconisation. / Fixings: please contact us for technical recommendation.

Existe en version sol/mur. / Floor to wall profile available.

The load-bearing capacity is always indicated for a joint in its initial position. In case of opening movements, the load-bearing capacity significantly reduces and the product will thus be only adapted for a light pedestrian traffic. The indicated load-bearing capacities are based on pneumatic wheels vehicles with a contact surface of 200x200 mm.

© All rights reserved - Non contractual drawings - 11/2021

Système de management certifié

ISO 9001:2015

BUREAU VERITAS
Certification



GV2 VEDA FRANCE

20, Allée des Erables - Bât. E - 93420 Villepinte - France

Adresse Postale

CS 63052 - 95972 Roissy CDG Cedex

Tél : + 33 (0)1 48 61 70 80

Fax : + 33 (0)1 48 61 70 81

E-mail : contact@vedafrance.com

Web : www.vedafrance.com