



**VEDA FRANCE**

Jointés bâtiment - Building joints

# Joint de dilatation de sol tout métal

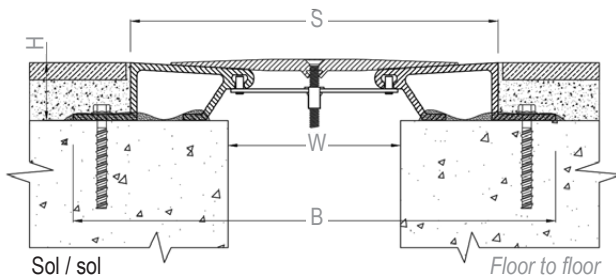
## All metal floor expansion joint

### Series JDH 6.17

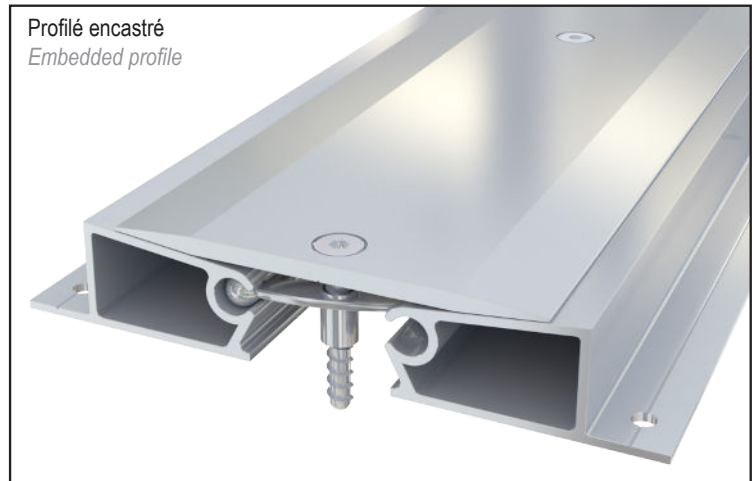
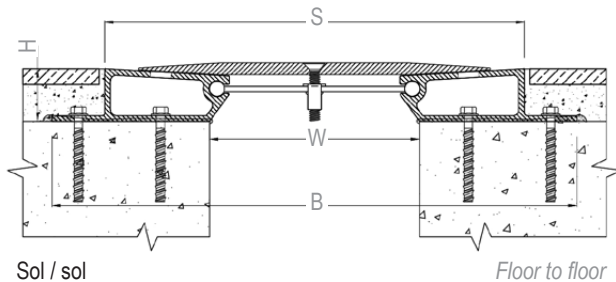
Joint de dilatation de sol sismique tout métal pour extérieur et intérieur. Pour tous types de finitions : dalle, chape, carrelage, marbre...

All metal floor expansion joint for exterior and interior use. For all types of finishes: screed, natural stone, cast stone, marble...

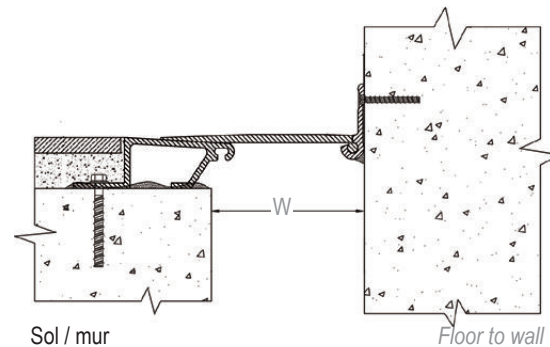
#### JDH 6.17-150



#### JDH 6.17-200\*



#### JDH 6.17-150 A



Ref. JDH 6.17	6.17-050	6.17-100	6.17-150	6.17-200
W [mm] Ouverture jusqu'à / Gap up to	50	100	150	200
H [mm] Hauteur / Depth	38		50 / 85	
S [mm] approx.	175	225	320	370
B [mm] approx.	226	276	420	470
Mouvements admissibles [mm] Movement capacity [mm]	+25 / -25	+50 / -50	+75 / -75	+100 / -100
Matériaux / Materials	Aluminium, plateau en aluminium ou acier inoxydable / Aluminium, aluminium or stainless steel cover plate			
Longueur standard [m] / Standard length [m]	2			
Charges [kN] Load-bearing capacity [kN]				

Version angle disponible. / Angle version available.

Fixations : nous consulter pour préconisation. / Fixings: please contact us for technical recommendation.

Veillez nous consulter pour vérifier l'utilisation du produit avec des engins à roues non pneumatiques. / Please contact us in case of traffic of vehicles with non-pneumatic wheels.

\*Design similaire pour les références 050 et 100. / Similar design for references 050 and 100.

The load-bearing capacity is always indicated for a joint in its initial position. In case of opening movements, the load-bearing capacity significantly reduces and the product will thus be only adapted for a light pedestrian traffic. The indicated load-bearing capacities are based on pneumatic wheels vehicles with a contact surface of 200x200 mm.

© All rights reserved - Non contractual drawings - 01/2022

Système de management certifié

ISO 9001:2015

**BUREAU VERITAS**  
Certification



**GV2 VEDA FRANCE**

20, Allée des Erables - Bât. E - 93420 Villepinte - France

Adresse Postale

CS 63052 - 95972 Roissy CDG Cedex

Tel : + 33 (0)1 48 61 70 80

Fax : + 33 (0)1 48 61 70 81

E-mail : contact@vedafrance.com

Web : www.vedafrance.com