

# VEDAFEU C<sup>®</sup> ROPES

**TESTED SMOKE TIGHTNESS  
 WITHOUT MECHANICAL FIXING**

“ *The most extensive  
 range in firestop systems* ”



**FIRESTOP 4H**  
 EI 240

**MOVEMENTS**  
 +20%

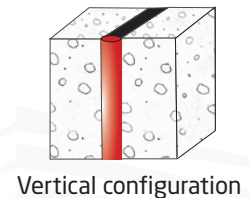
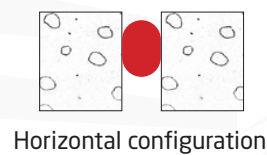
**JOINT WIDTHS**  
 10 to 120mm

**TESTED  
 CERTIFIED**

## VEDAFEU C<sup>®</sup> ROPE STRENGTHS

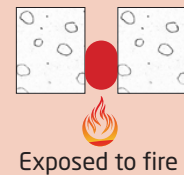
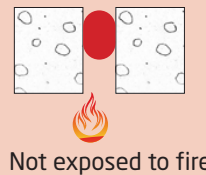
### CONFIGURATIONS

Tested and certified for horizontal and vertical applications.



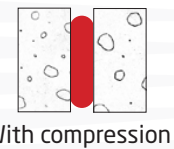
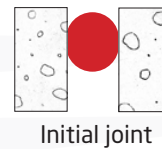
### EXPOSURE

Tested and certified not exposed or exposed to fire.



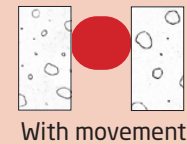
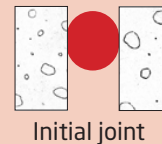
### COMPRESSIBILITY

Tested and certified up to **-85%** compression.



### EXPANSION MOVEMENTS

Tested and certified up to **+20%** expansion.



**EASY** to handle and to install.



**SAFE** for the health and the environment.



### APPLICATIONS

Hospitals, industrial buildings, offices, housing, hotels, malls, car parks, schools, train stations, airports, stadiums, etc.



# OFFICIAL CLASSIFICATION

Classification report n° EFR 20-002698 dated 01/09/2020

**EI 240 - H - M20 - B - W 10 to 120**  
**EI 240 - V - M20 - B - W 10 to 120**

Other classification reports upon request: with sealant, joint cover, EPDM membrane, head-of-wall, exposed to fire...  
 Refer to classification report or ETA for types and thicknesses of supports validated.



European Technical Assessment: ETA 22/0321.  
 Declaration of performance: N° C-22/0321

## VEDAFEU C<sup>®</sup> Ropes according to initial joint width

Initial joint width [mm]	10	13	20	26	33	40	50	60	70	80	90	100	110	120
Reference* VEDAFEU C <sup>®</sup> Ø rope [mm]	C12	C20	C30	C40	C50	C60	C75	C90	C105	C120	C135	C150	C165	C180
Quantity [m]	50	30		25		20	18	10	Bags of 2 lengths of 2m.					
Conditioning	Per roll													

\*Minimum compression of 33% (except for 10mm gaps : 17%).

Maximum validated gap = initial gap + M20 (20%).

A colour system has been thought to easily identify different diameters and prevent misuse.

## Installation instructions for joint widths from 10 to 120mm\*



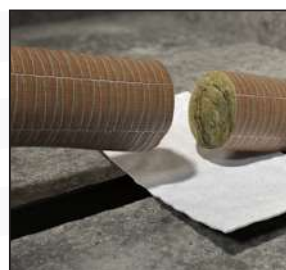
If necessary, remove formwork material such as polystyrene, honeycomb cardboard, etc. Remove dust, using a brush or a broom.



Apply a layer of VEDACOLLE<sup>®</sup> adhesive with a brush on both sides of the joint.



While the adhesive is still wet, insert VEDAFEU C<sup>®</sup> by hands into the joint.



Splicing of 2 lengths (patented).



VEDAFEU C<sup>®</sup> with junction.

\*Brief installation instructions. Complete installation method available upon request.

\*\*When applying the VEDACOLLE<sup>®</sup> adhesive, supports must be dry and clean. In case of potential exposure to water and/or weather conditions, the system must be protected by a VED/EPDM<sup>®</sup> membrane.

For installation accessories, approved concrete supports and thicknesses, please refer to the concerned classification report.

The quantities needed for the VEDAFEU installation are indicated in the classification report and in our installation method.

Installation video and method available upon request.





# CERTIFIED CONFIGURATIONS

**CERTIFIED**



**NO sealant  
NO joint cover**

**CERTIFIED**



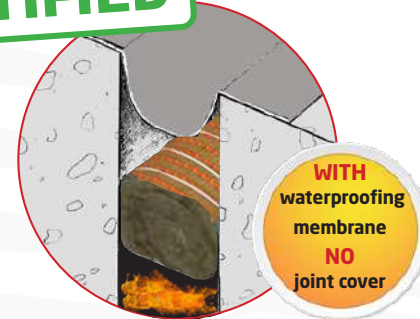
**WITH joint cover  
NO sealant**

**CERTIFIED**



**WITH sealant  
NO joint cover**

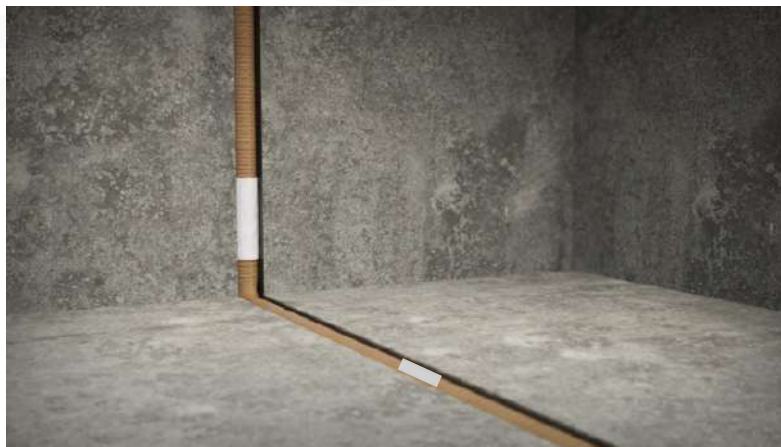
**CERTIFIED**



**WITH waterproofing membrane  
NO joint cover**

# EXAMPLES OF APPLICATIONS

- 1 Floor, wall and ceiling expansion joints



Application on floor and wall with junctions.





## ② Head-of-wall

The use of a single Firestop VEDAFEU C<sup>®</sup> rope at the centre of the joint in a head-of-wall configuration has been tested and certified by Efectis France, CSTB and CERIB.

The last configuration validated offer a performance whatever the fire side with a single Firestop VEDAFEU C<sup>®</sup> rope with a compression rate of 33% in the middle of the masonry without adhesive. Other results are available on page 18.



VEDAFEU C<sup>®</sup> in head-of-wall.

Performance	<b>EI 180</b>
Compression*	33%
Adhesive	No
Fire side	Any
Rope configuration	At the centre of the joint
Masonry support thickness	≥ 150mm
Density of the supports	≥ 500kg/m <sup>3</sup>

### EASY AND FAST INSTALLATION

- ▶ Can be done even if the access is only possible on one side of the wall.
- ▶ Without adhesive application. Simplified connections.
- ▶ The diameter of rope can be adapted in case of irregular joints.
- ▶ Easy quality control, visual check thanks to our colour code.

Classification report n° EFR-22-003520 A\* **EI 180 - T - X - F - W 10 to 80**

\*Minimum compression of 33% (except for 10mm gaps : 17%).

\*Valid until 24/02/2028

The connections between ropes are made with VEDAFEU SFR sealant.

Adhesive and connection pieces are required for other configurations : rope location, different thicknesses and densities supports. Contact us.

### VEDAFEU C<sup>®</sup> ropes - Color code and conditioning

Joint width (mm)	10	13	20	26	33	40	50	60	70	80
Reference* VEDAFEU C <sup>®</sup> color code and Ø rope (mm)	C12	C20	C30	C40	C50	C60	C75	C90	C105	C120
Quantity (lm)	50	30		25		20	18	10	Bags of 2 lengths of 2m	
Conditioning	Per roll									



## CERTIFIED INSTALLATION WITH JOINT COVER (Optional)



VEDAFEU C® with special head-of-wall joint cover.

## OTHER CERTIFIED CONFIGURATIONS

### FIRE EXPECTED FROM ONE SIDE

One rope on the opposite side



Performance	<b>EI 240</b>
Compression	33%
Adhesive	Compulsory
Accessibility	Opposite side

Two ropes on the exposed side



Performance	<b>EI 120</b>
Compression	33%
Adhesive	Compulsory
Accessibility	Exposed side

### FIRE EXPECTED FROM BOTH SIDES

One rope on each side



Performance	<b>EI 240</b>
Compression	33%
Adhesive	Compulsory
Accessibility	Both sides

Two ropes on one side



Performance	<b>EI 120</b>
Compression	33%
Adhesive	Compulsory
Accessibility	Any sides



### Other applications

Windows and doors frames, bearing protection, facade panels, tunnels ...



# VEDAFEU C<sup>®</sup> PROPERTIES

## VEDAFEU C<sup>®</sup> firestop rope COMPRESSIBILITY tests

Ref.	Test	Load F (kN) and VEDAFEU C <sup>®</sup>	Compressibility	Immediate form recovery	After 2 hours form recovery	After 72 hours form recovery
VEDAFEU C <sup>®</sup> Ø 60	1	11,5	83%	57%	63%	73%
	2	12,1	83%	57%	63%	70%
	3	11,5	83%	60%	65%	73%
<b>AVERAGE</b>			<b>83%</b>	<b>58%</b>	<b>64%</b>	<b>72%</b>
VEDAFEU C <sup>®</sup> Ø 100	1	30,3	86%	52%	63%	72%
	2	30,3	86%	61%	72%	83%
	3	30,3	86%	57%	72%	81%
<b>AVERAGE</b>			<b>86%</b>	<b>57%</b>	<b>69%</b>	<b>79%</b>
VEDAFEU C <sup>®</sup> Ø 150	1	100	86%	40%	69%	74%
	2	100	87%	44%	60%	63%
	3	100	88%	46%	60%	64%
<b>AVERAGE</b>			<b>87%</b>	<b>43%</b>	<b>63%</b>	<b>67%</b>

Results of test report n° MRF 19 26080307 dated 14/05/2019 (available upon request).

## VEDAFEU C<sup>®</sup> firestop rope SHEARING tests

Reference VEDAFEU C <sup>®</sup>	VEDAFEU C60	VEDAFEU C100	VEDAFEU C150
Maximum load - Fmax (daN)	76,2	60,7	215,2
Displacement at Fmax (mm)	55,1	43,6	40,4

Results of test report n° EEM 20 26087588 dated 26/10/2020 (available upon request).

## VEDAFEU C<sup>®</sup> AIR and SMOKE tightness

Nominal pressure (Pa)	50	100	150	200	250
Permeability (m <sup>3</sup> /h)	0.0	0.0	0.0	0.0	0.0

Results of test report n° 16-26061937 dated 22/03/2016 (available upon request).

## VEDAFEU C<sup>®</sup> THERMAL Properties In accordance with the Thermal Regulation RT 2012

Thermal resistance	C30	C50	C60	C70	C90	C120	C180	Ø mm	ASTM D5930
	0,70	1,23	1,84	1,77	2,47	3,46	5,55	m <sup>2</sup> .KW	

The thermal value (λ) of VEDAFEU C<sup>®</sup> firestop rope is about 0.040 W/mK at 20°C.

Results of test report n° RA.15.36.EB-V3a dated 29/06/2016 (available upon request).

## VEDAFEU C<sup>®</sup> ACOUSTIC Properties In accordance with the NRA (acoustic regulations)

Sound attenuation	C30	C60	C90	C120	C150	C180	Ø mm	EN ISO 717 - 1
	34	36	40	40	40	40	dB	

Sound attenuation (dB) depending on diameter of rope (mm).

Results of test report n° BEB2.F.6023 dated 09/07/2015 (available upon request).

