

VEDAFEU N[©] BLANKETS

“ *VEDA FRANCE, always ahead in terms of fire protection to offer solutions for gap up to 840mm* ”



**FIRESTOP UP TO
4H EI 240**

**MOVEMENTS
SEISMIC +50%**

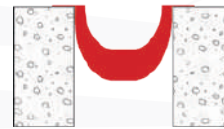
**JOINT WIDTHS*
150 to 560mm**

**TESTED
CERTIFIED**

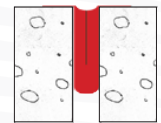
VEDAFEU N[©] BLANKET STRENGTHS

COMPRESSIBILITY

Tested and certified up to **-75%** compression.



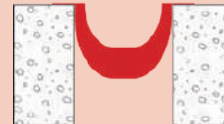
Initial joint



With compression

EXPANSION MOVEMENTS

Tested and certified up to **+50%** expansion.



Initial joint



With movement

EASY to handle and to install.



SAFE for the health and the environment.



APPLICATIONS

Hospitals, industrial buildings, offices, housing, hotels, malls, car parks, schools, train stations, airports, stadiums, etc.



*Maximum joint width: 840mm.



OFFICIAL CLASSIFICATION

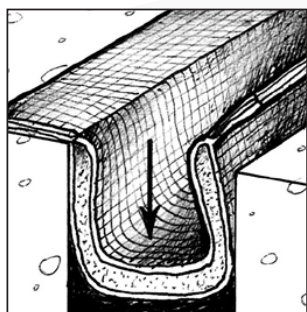
Reference	Initial gap [mm]	Maximum gap [mm]	Official classification	Joint cover
N 150 (EI 180 with joint cover)	150	225	EI 180 - H - M50 - B - W 150	compulsory
N 150 (EI 240 with joint cover)	150	225	EI 240 - V - M50 - B - W 150	compulsory
N 200 (EI 180 with joint cover)	200	300	EI 180 - H - M50 - B - W 200	compulsory
N 400 (EI 60 with joint cover)	400	600	EI 60 - H - M50 - B - W 400	optional
N 400 (EI 120 with joint cover)	400	600	EI 120 - H - M50 - B - W 400	compulsory
N 560 (EI 240 with joint cover)	560	840	EI 240 - H - M50 - B - W 560	compulsory

Refer to classification report or ETA for types and thicknesses of supports validated.

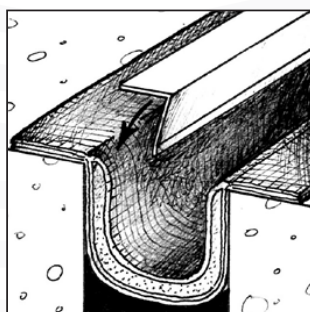
Installation instructions for joint widths from 150 to 560mm*

Efectis **CSTB**
le futur en construction

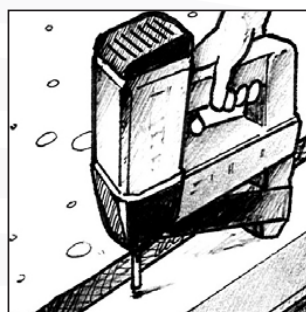
If necessary, remove formwork material such as polystyrene, honeycomb cardboard, etc. and clean and dust the edges of the joint.



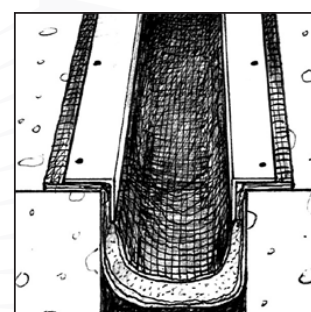
Make sure that the joint edges are straight and clean to get a good contact between the blanket and its supports.



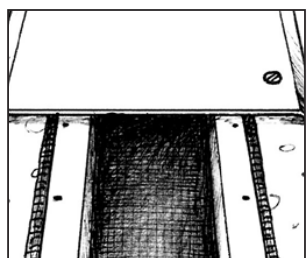
Flatten the blanket against the concrete with the flange.



Keep the pressure on the flange while fixing with a pneumatic nailer.



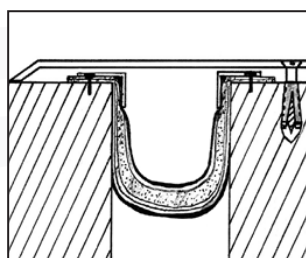
VEDAFEU N® blanket after installation.



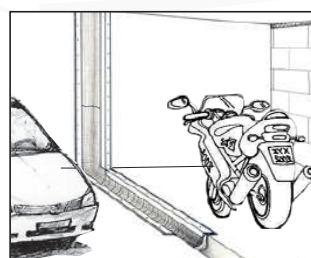
Joint cover affixed with VEDAFLEX SIL sealant or mechanical fixings.



Detail.



Section VEDAFEU N® after installation.



Application on floor and wall with junctions.

*Brief installation instructions. Complete installation method available upon request.

For installation accessories, approved concrete supports and thicknesses, please refer to the concerned classification report.

The quantities needed for the VEDAFEU installation are indicated in the classification report.

