

# VEDAFEU C-FM<sup>®</sup> ROPES

**WITHOUT MECHANICAL FIXING**

“ *The rope range  
with 50% movement* ”



**FIRESTOP 2H**  
**EI 120\***

**SEISMIC**  
**MOVEMENTS +50%**

**JOINT WIDTHS**  
**20 to 60mm**

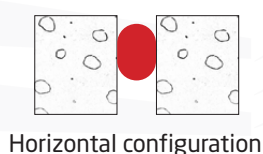
\*Up to 4 hours depending on joint widths.

**TESTED  
CERTIFIED**

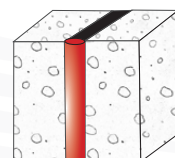
## VEDAFEU C-FM<sup>®</sup> ROPE STRENGTHS

### CONFIGURATIONS

Tested and certified for  
horizontal and vertical applications.



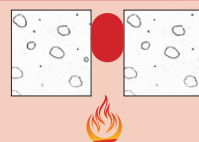
Horizontal configuration



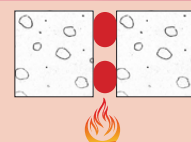
Vertical configuration

### EXPOSURE

Tested and certified  
not exposed to fire.



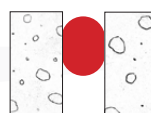
Not exposed to fire



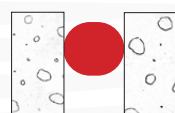
Exposed to fire

### EXPANSION MOVEMENTS

Tested and certified up to **+50%** expansion.



Initial joint



With movement

**EASY** to handle and to install.

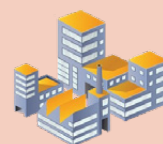


**SAFE** for the health and the environment.



### APPLICATIONS

Hospitals, industrial buildings, offices, housing, hotels,  
malls, car parks, schools, train stations, airports, stadiums, etc.



# OFFICIAL CLASSIFICATION

Classification report n° EFR-23-004654 dated 23/04/2025

Horizontally (one rope on each side) **EI 240 - H - M50 - B - W 20 to 60**

Horizontally (one rope on the unexposed side) **EI 120 - H - M50 - B - W 40 to 60\***

Vertically (one rope on the unexposed side) **EI 120 - V - M50 - B - W 40 to 60\***

\*Several joint widths are available in EI 240, please contact us.

Refer to classification report for types and thicknesses of validated supports.

## VEDAFEU C-FM® Ropes according to initial joint width

Initial joint width [mm]	20	25	30	40	50	60
VEDAFEU C-FM® references* Ø rope [mm]	C-FM40	C-FM50	C-FM60	C-FM80	C-FM100	C-FM120
Quantity [m]	25		20	15	10	5
Conditioning	Per roll					

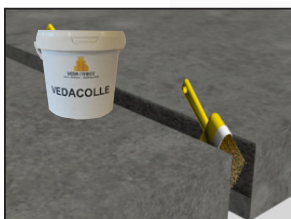
\*Minimum compression of 50%.

Maximum validated gap = initial gap + M50 (50% of initial joint width).

## Installation instructions for joint widths from 40 to 60mm\* - EI 120



If necessary, remove formwork material such as polystyrene, honeycomb cardboard, etc. Remove dust, using a brush or a broom.



Apply a layer of VEDACOLLE® adhesive with a brush on both sides of the joint.



While the adhesive is still wet, insert VEDAFEU C-FM® by hands into the joint.



Splicing of 2 lengths (patented).

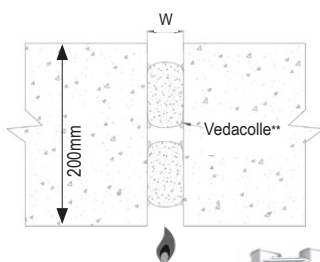


VEDAFEU C-FM® with junction.

## Installation instructions for joint widths from 20 to 60mm - EI 240

\*Brief installation instructions. Complete installation method available upon request.

\*\*When applying the VEDACOLLE® adhesive, supports must be dry and clean.



For EI 240 validation, repeat the installation steps from the exposed side.

In case of potential exposure to water and/or weather conditions, the system must be protected by a VED'EPDM® membrane.

For installation accessories, approved concrete supports and thicknesses, please refer to the concerned classification report. The quantities of adhesive required to install VEDAFEU C-FM® are indicated in the classification report and in our installation method.

Installation video and method available upon request for the installation of a single unexposed rope.



# VEDAFEU C-FM<sup>®</sup> PROPERTIES

## VEDAFEU C-FM<sup>®</sup> firestop rope COMPRESSIBILITY tests

Reference of tested items	Starting values of the firestop rope	Compressibility		
	Diameter (mm)	Under load 90 kN		Compared to the nominal diameter
		mm	%	%
VEDAFEU C-FM <sup>®</sup> Ø 50	25	5	82	90
VEDAFEU C-FM <sup>®</sup> Ø 80	40	15	69	81
VEDAFEU C-FM <sup>®</sup> Ø 120	60	24	70	80

Results of test report n° DSSF 24-32710 dated 25/11/2024 (available upon request).

## VEDAFEU C-FM<sup>®</sup> MOVEMENT CYCLES tests

VEDAFEU C-FM <sup>®</sup> references	VEDAFEU C-FM <sup>®</sup> -50	VEDAFEU C-FM <sup>®</sup> -80	VEDAFEU C-FM <sup>®</sup> -120
Initial joint width (mm)	25	40	60
Maximum gap (mm)	12	20	30
Minimum gap (mm)	38	60	90
Number of cycles	500		

Results of test report n° DSSF 24-32710 dated 25/11/2024 (available upon request).

